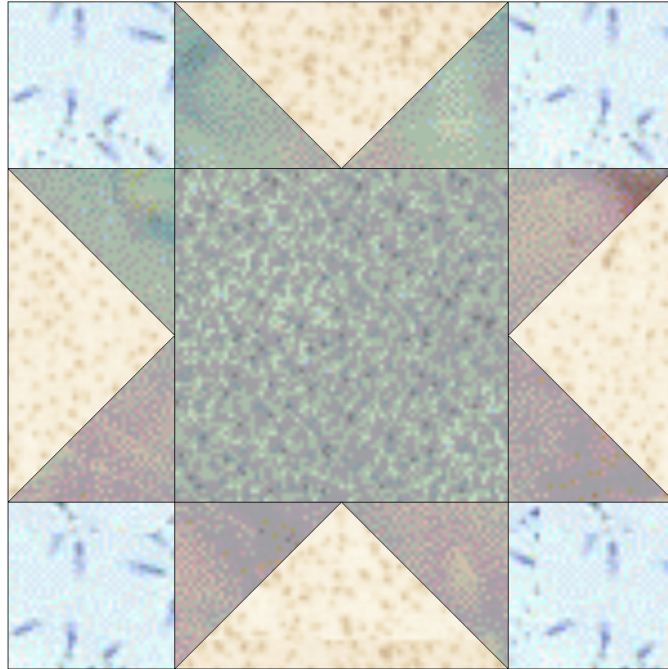


Meadowside Designs



Sawtooth Star

Block size: 12 inches

Cutting:

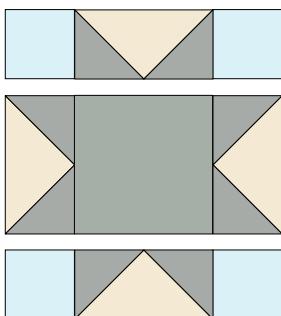
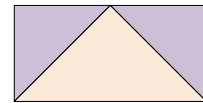
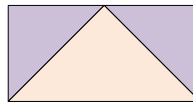
From background cut 1, $7\frac{1}{4}$ inch square; from 'star' fabric cut 4, $3\frac{3}{8}$ inch squares; from corner fabric cut 4, $3\frac{1}{2}$ inch squares; from centre fabric cut 1, $6\frac{1}{2}$ inch square.

Block

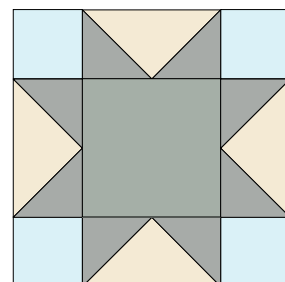
From the large background square and 4 star squares make 4 Flying Geese units

(see

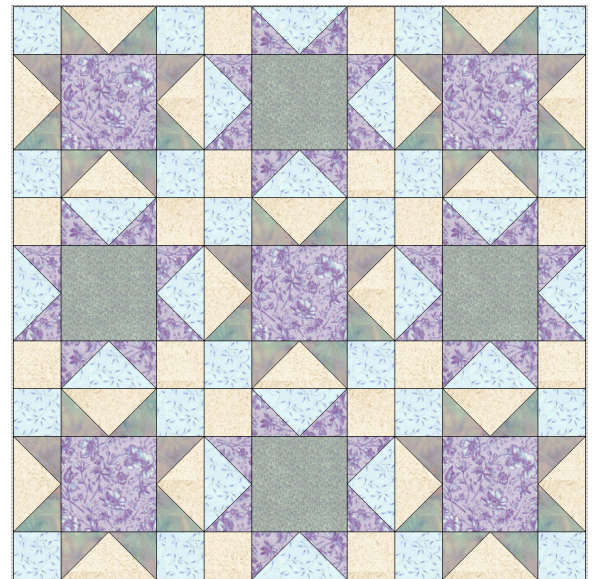
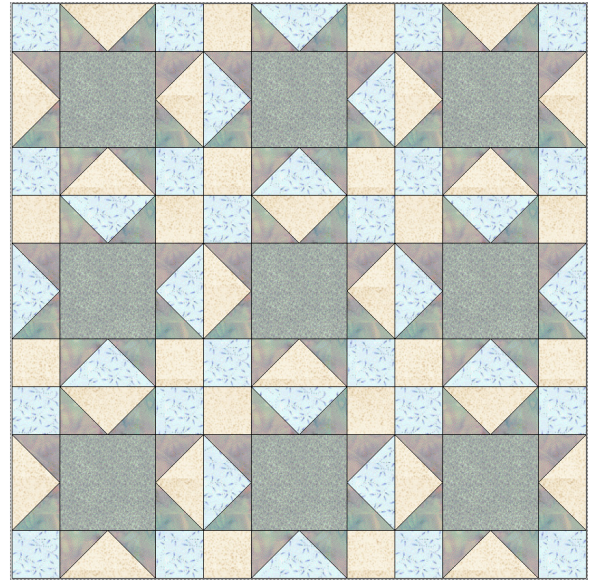
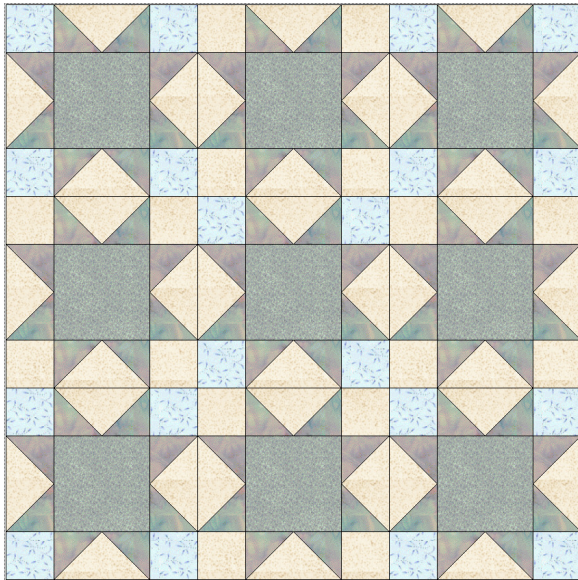
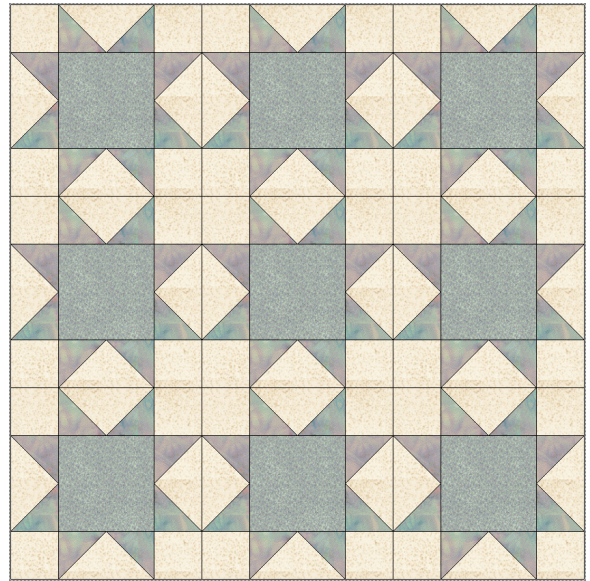
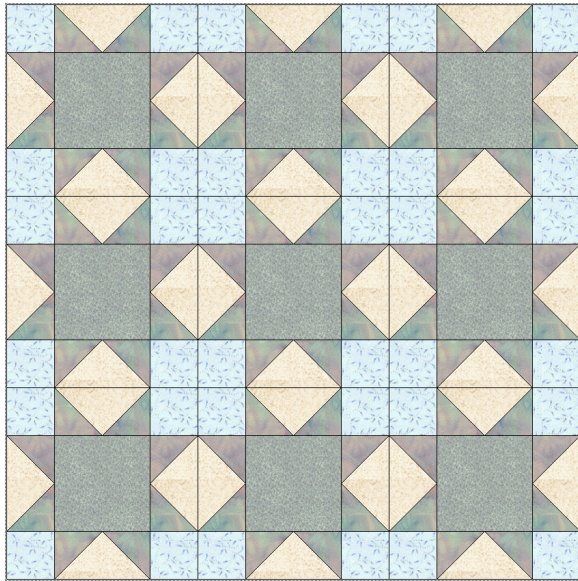
<https://meadowsidedesign.files.wordpress.com/2015/06/flying-geese-tutorial.pdf> for details).



Stitch these units to the squares to make 3 rows. Stitch the rows together to complete the block.



Quilt Ideas



© Meadowside Designs, 2015

<https://payhip.com/meadowsidedesigns>
<http://meadowsidedesign.wordpress.com>